

# News Announcement | dteq

## dteq Celebrates 10 Years of Engineering Excellence and Global Growth

**Bremen, Germany, July 6, 2026 – dteq Transport Engineering Solutions (dteq) marks its 10th anniversary this June, celebrating a decade of continuous growth, innovation, and award-winning excellence in the field of transport engineering.**

Founded in 2016, dteq has grown from a team of 16 to more than 60 engineering experts worldwide—evolving into a globally recognized provider of sophisticated transport engineering solutions, with offices spanning the Americas, Europe, Asia-Pacific, and the Middle East.

Despite the significant challenges that have shaped the project logistics industry over the past decade—from geopolitical conflicts and the COVID-19 pandemic to the Suez Canal blockage and growing shortages of skilled labor, equipment, and freight capacity—dteq has continued to strengthen its market position by investing in multidisciplinary expertise, expanding its global footprint, and fostering a strong, resilient team culture.

“The development we have gone through as a team over the past 10 years is remarkable. Not only have we grown significantly in numbers, but even more importantly in capability, quality, and expertise. What makes this achievement especially rewarding is that we accomplished it through organic growth—continuously developing our people, our skillsets, and our technology. Above all, I am proud to work every day with such a dedicated and exceptional team.” said Hagen Hennig, President of dteq Transport Engineering Solutions.

Today, supporting all project phases from FEED/Pre-FEED to implementation to the close-out phase, dteq supports clients across all project-related industries with tailor-made transport and marine engineering solutions, feasibility and infrastructure studies, surveying and supervision services, project consulting, and execution support.

“The past 10 years have been a period of significant transformation for both our industry and our company. We did not simply grow—we earned the trust of our clients and established a strong reputation as a reliable and innovative engineering partner for highly complex projects. Our success is built on a clear identity as a neutral, solution-driven engineering company that combines technical

expertise with practical execution,” said Boris Dykiert, Commercial Director of dteq Transport Engineering Solutions.

“We would like to sincerely thank our clients for their trust and our partners for their excellent collaboration throughout the past decade,” added Hennig. “Together, they have helped shape dteq into what it is today. We look forward to the next 10 years with great motivation and excitement.”

**END**

**Note to the editor**

Please refer to dteq and the deugro group in lower case as per a rebranding of the company in 2018. For more information, please visit: <https://dteq-solutions.com/>

**Please use the images related to this press release with the following captions:**



**CAPTION:** Hagen Hennig, President of dteq Transport Engineering Solutions



**CAPTION:** Boris Dykiert, Commercial Director of dteq Transport Engineering Solutions



**CAPTION:** HLPFI Award “Excellence in engineering 2022”



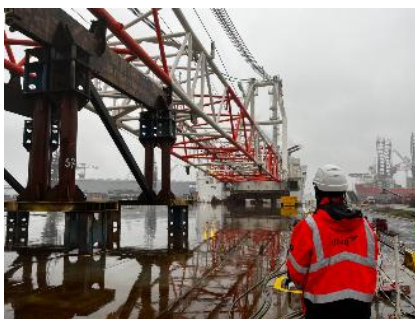
CAPTION: dteq site survey in remote area, accessible only by chartered flight, boat, or helicopter.



CAPTION: dteq, test drive to simulate the maximum cargo envelope during a survey trip in Brazil.



CAPTION: Customized transport saddles engineered by dteq for the safe and efficient delivery of 140 oversized car bodies, ensuring seamless compatibility across trucks, trailers, barges, ocean vessels, cranes, lifting equipment and rail transport.



CAPTION: dteq supervising the loading and securing of a 1,900-metric-ton pedestal crane (165 x 23 x 43 m) from a barge onto a deck carrier.



CAPTION: dteq providing personal on-site supervision of port crane loading operations.



CAPTION: dteq planning, engineering, supervising, and coordinating the delivery of 21,000 metric tons of modular cargo for a Canadian Arctic mining project, including a 1,875-metric-ton module measuring 32 x 29 x 30 m.



CAPTION: dteq's engineered solution for the safe and efficient transfer and securing of a 25,778 CBM LNG module from a barge to a deck carrier.



CAPTION: dteq supervising discharge and on-carriage operations for the EGAT project in Poland.



CAPTION: Marine engineering, sea fastening design and offshore transportation support provided by dteq for a major natural gas storage project.

## About dteq

dteq provides tailor-made transport and marine engineering solutions, as well as project execution, surveying and supervision services, and project consulting. To solve and overcome all the challenges of moving oversized and heavy cargo, dteq's experts leverage decades of specialized engineering knowledge and experience. They do so with dedication, talent and an inventive spirit for every project phase.

dteq's vast experience, knowledge and innovative approach in the international market, and its understanding of clients' individual needs and requirements, make it a strong and dynamic partner in a challenging business environment, successfully delivering with dedication to any destination. Industry-leading and creative engineering expertise and a strong background in unrivalled project intelligence and quality enable dteq to create value at every link of the clients' supply chain. State-of-the-art IT technology caters to fulfilling client needs down to the finest detail.

dteq Transport Engineering Solutions was founded in 2016 in Germany by Thomas C. Press and is a family-owned enterprise. Today, dteq is an independent company of the deugro group, which is comprised of several companies focusing on project freight forwarding, ocean transportation of heavy lift and project cargo, transport and marine engineering as well as heavy haulage equipment operating.

**dteq –  
Corporate Communication and Marketing**

**c/o DEHOCO (Deutschland) GmbH**  
Martinistrasse 34  
28195 Bremen  
Germany

E: [pr@deugro-group.com](mailto:pr@deugro-group.com)